

Technik-Katalog

Premium Slide SH

- Shower door fittings
- Reinforcement bars
- Sliding door systems
- Magneticpointfixings



01 | Shower door fittings

Premium Slide SH Sliding Door System

The Premium Slide SH sliding door fittings for all-glass showers stand out thanks to their unobtrusive yet elegant design and their high-quality stainless steel. Regardless of whether they are used in private or commercial buildings - the Slide SH sliding door fittings impressively live up to the highest quality standards.





Premium Slide SH Sliding Door Fittings, Corner Application, 2 Doors

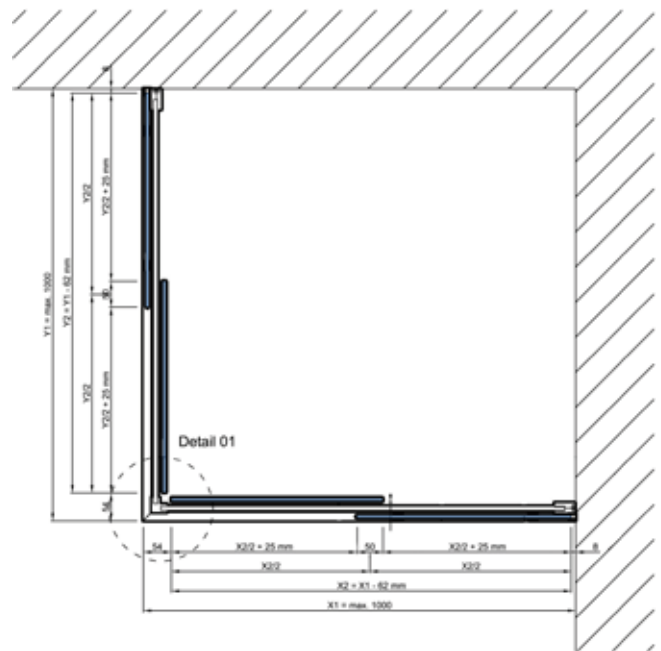
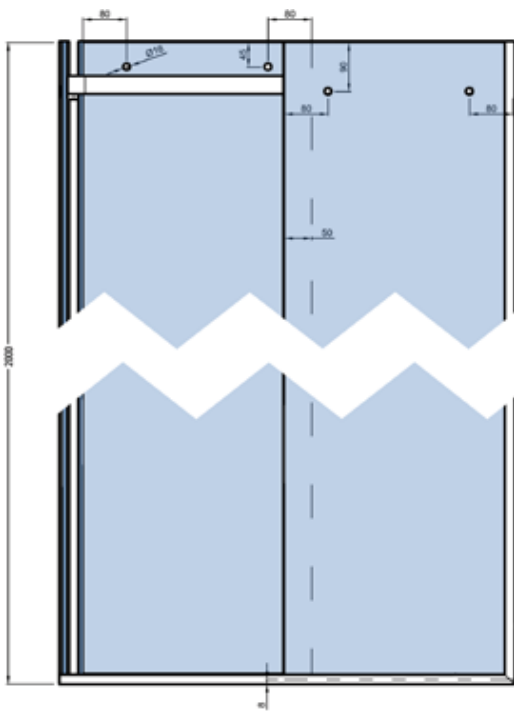


Corner application

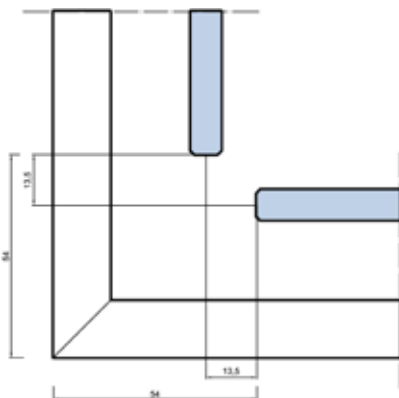
i Glass thickness tempered glass 8, 10 mm · door weight max. 60 kg · double doors · material: stainless steel (AISI 1.304) · length sliding track tube 2 x 1000 mm

Art. no.

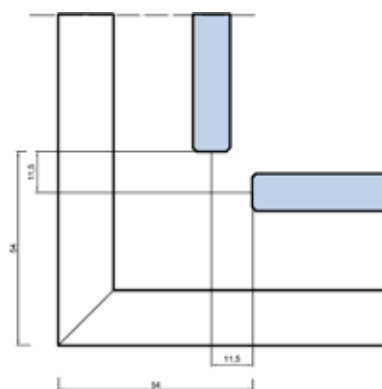
BO 5214890



8 mm



10 mm



► Premium Slide SH Sliding Door Fittings, Recess Application, Single Door

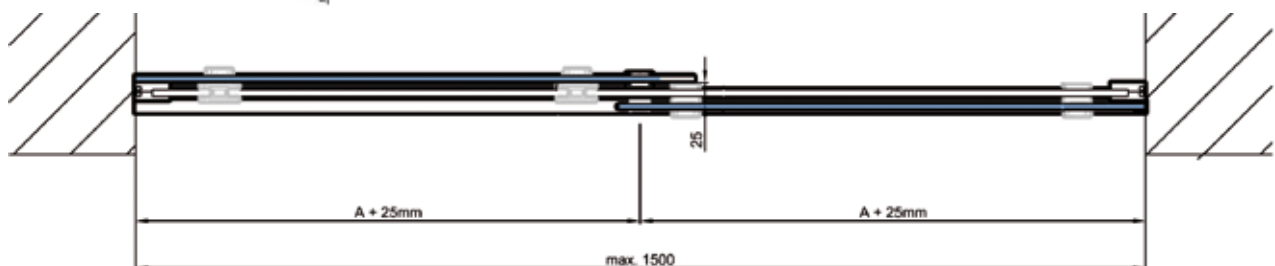
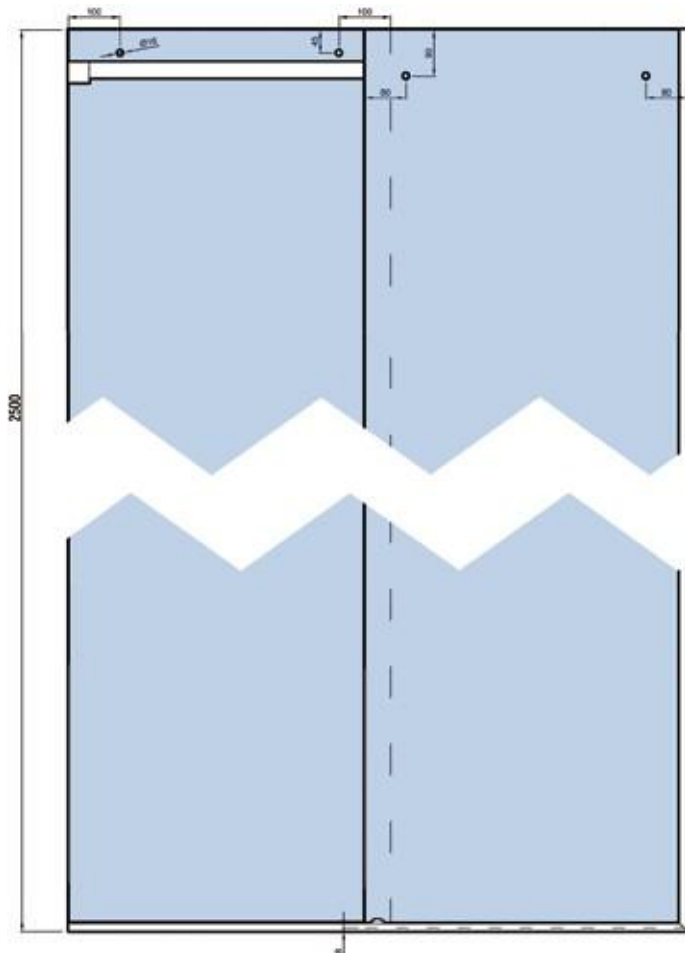


Recess application

i Glass thickness tempered glass 8, 10 mm · door weight max. 60 kg · single door · material: stainless steel (AISI 1.304) · length sliding track tube 1500 mm

Art. no.

BO 5214891





Premium Slide SH Sliding Door Fittings, Recess Application, Single Door with Side Panel



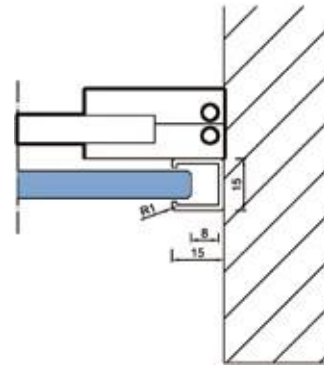
Recess application with glass side panel

i Glass thickness tempered glass 8, 10 mm · door weight max. 60 kg · single door · material: stainless steel (AISI 1.304) · length sliding track tube 1500 mm

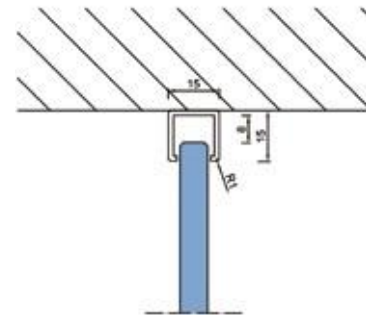
Art. no.

BO 5214892

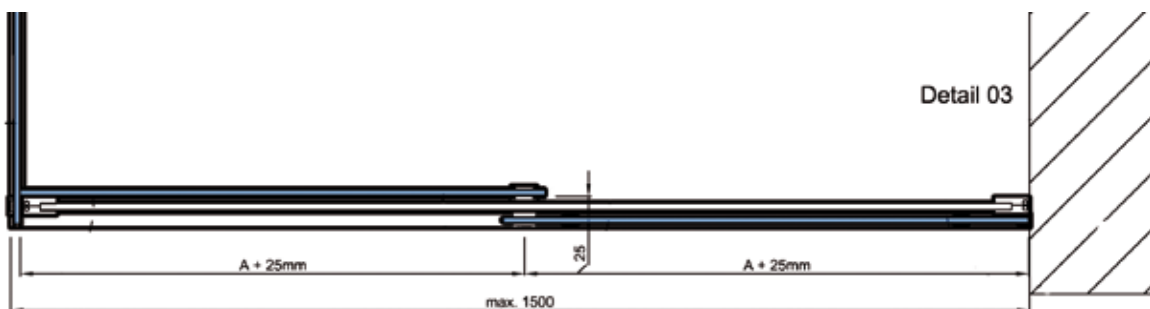
Detail 03



Detail 04



Detail 03



02 | Reinforcement Bars



Premium Reinforcement Bars, Round

Premium Reinforcement Bar, Glass-Wall

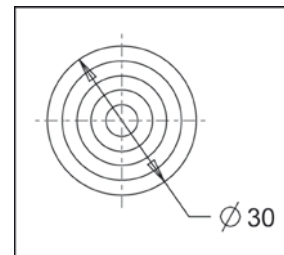
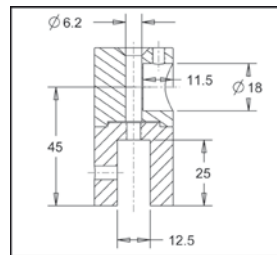
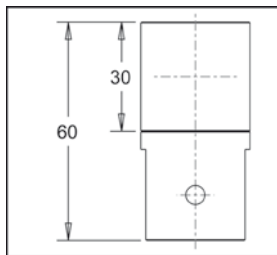
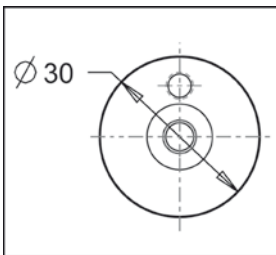
i Diameter 18 mm · glass thickness 8 - 10 mm · material: stainless steel, mirror polished



Art. no.	Length
BO5420076	1000 mm
BO 5420078	1500 mm

This set comprises the following items:

BO5420083	Wall connector	1 piece
BO5420071	Glass connector / end piece	1 piece
	Reinforcement bar, 1000 mm or 1500 mm	1 piece



Premium Reinforcement Bar, Glass-Glass Set

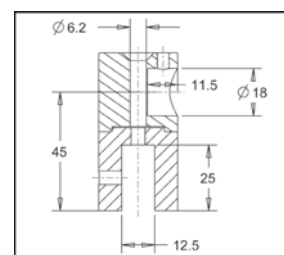
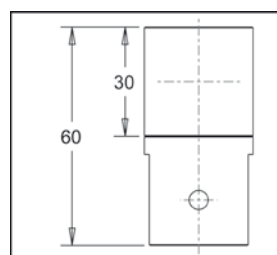
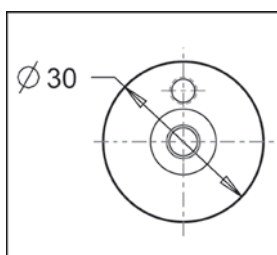
i Diameter 18 mm · glass thickness 8, 10 mm · material: stainless steel, mirror polished



Art. no.	Length
BO5420072	1000 mm
BO 5420074	1500 mm

This set comprises the following items:

BO5420071	Glass connector / end piece	2 pieces
	Reinforcement bar, 1000 mm or 1500 mm	1 piece



▶ Premium Reinforcement Bar

❶ Diameter 18 mm · material thickness 1.5 mm · material: stainless steel, mirror polished



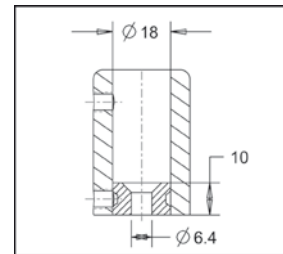
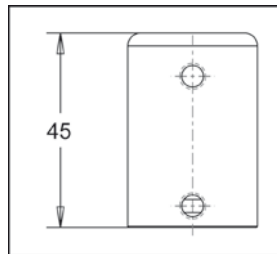
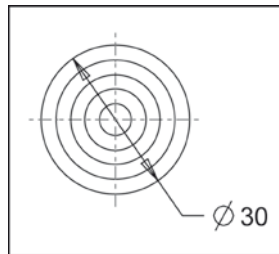
Art. no.	Length
BO 5420079	1000 mm
BO 5420070	2000 mm

▶ Premium Wall Connector

❶ Diameter 30 mm · material: stainless steel, mirror polished



Art. no.
BO 5420083

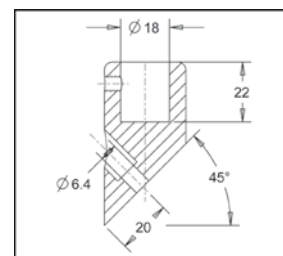
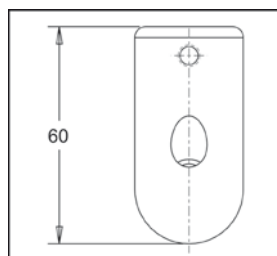
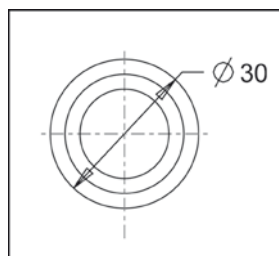


▶ Premium Wall Connector 45°

❶ Diameter 30 mm · material: stainless steel, mirror polished



Art. no.
BO 5420073





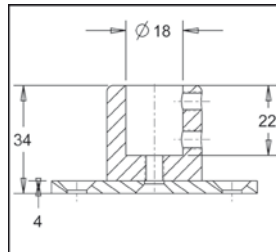
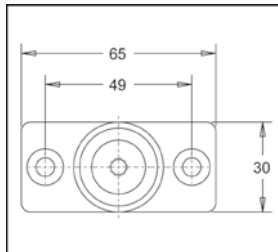
Premium Wall Connector



i Material: stainless steel, mirror polished

Art. no.

BO 5420080



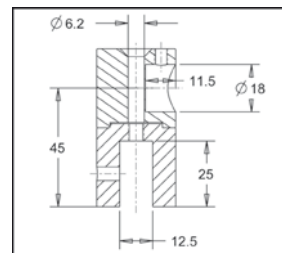
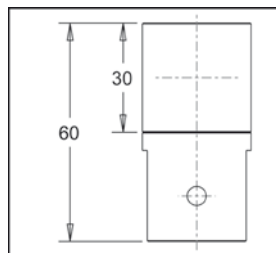
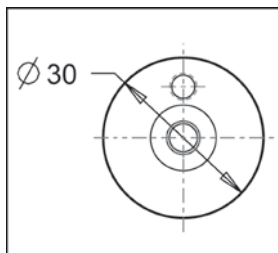
Premium Glass Connector / End Piece



i Diameter 30 mm · material: stainless steel, mirror polished · glass thickness 8, 10 mm

Art. no.

BO 5420071



Premium Corner Connector

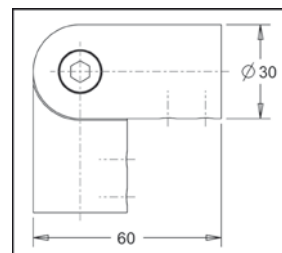
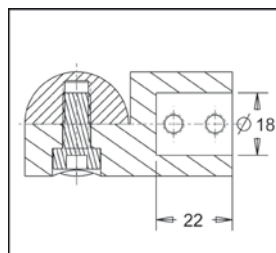
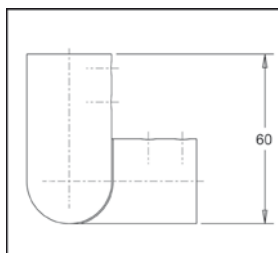
i Material: stainless steel, mirror polished



Art. no.

BO 5420081 right

BO 5420082 left



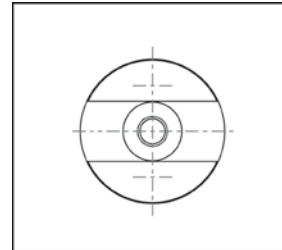
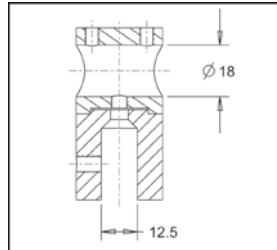
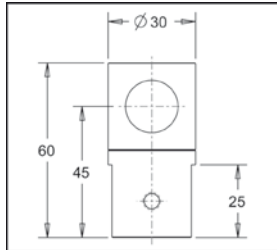
Premium Glass Connector



Material: stainless steel, mirror polished · diameter 30 mm · glass thickness 8-10 mm

Art. no.

BO 5420075



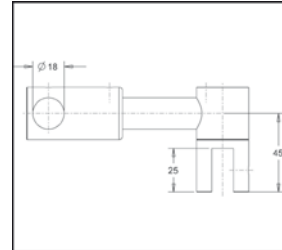
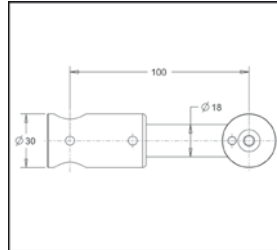
Premium Glass Connector



Length 80 mm · material: stainless steel, mirror polished
Adapter reinforcement bar and glass connector BO 5420075 sold separately

Art. no.

BO 5420077



Premium Reinforcement Bars, Square

▶ Premium Reinforcement Bar, Square, 1000 mm, Glass-Wall

i Length 1000 mm · glass thickness 8, 10 mm · assembly glass-wall · material: brass · surface chrome-plated



Art. no.

BO 5420088

This set comprises the following items:

BO5420085	Reinforcement bar, 1000 mm	1 piece
BO5420089	Wall connector	1 piece
BO5420091	Glass connector end piece	1 piece

▶ Premium Reinforcement Bar, Square, 1000 mm, Glass-Glass

i Length 1000 mm · glass thickness 8, 10 mm · assembly glass-glass · material: brass · surface chrome-plated



Art. no.

BO 5420087

This set comprises the following items:

BO5420085	Reinforcement bar, 1000 mm	1 piece
BO5420091	Glass connector end piece	2 pieces

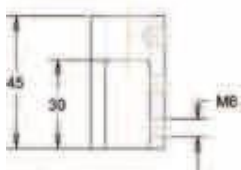
▶ Premium Wall Connector, Square

i Material: brass · surface chrome-plated



Art. no.

BO 5420089



▶ Premium Wall Connector 45°, Square

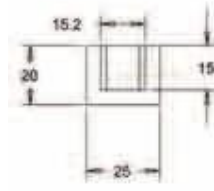
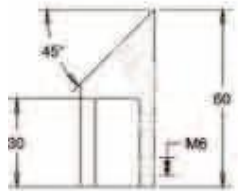
Material: brass · surface chrome-plated



Art. no.

BO 5420090 for use on left side

BO 5420090R for use on right side



▶ Premium Reinforcement Bar, Square

Material: brass · surface chrome-plated · without connectors

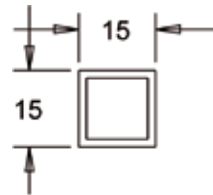


Art. no. Length

BO 5420084 500 mm

BO 5420085 1000 mm

BO 5420086 2000 mm





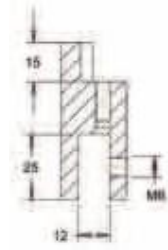
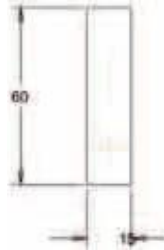
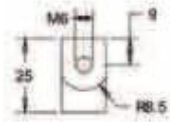
Premium Glass Connector End Piece, Square

i Material: brass · surface chrome-plated · glass thickness 8-10 mm



Art. no.

BO 5420091



03 | Sliding Door Systems

SlideTec Premium Sliding Door System

SlideTec Premium moves doors with a weight of up to 150 kg, a width of 1 metre and a maximum height of 2.5 metres almost without a sound. The new anti-jump mechanism also guarantees highest security for frequently used doors. Customised applications can be effortlessly achieved with this system.





With anti-jump mechanism

i Assembly: Wall mounting · glass thickness tempered glass 8, 10, 12 mm · door weight max. 150 kg · material: stainless steel (AISI 1.304) · length sliding track tube 2000 mm



SlideTec Premium Sliding Door Fittings Set, Glass-Mounting

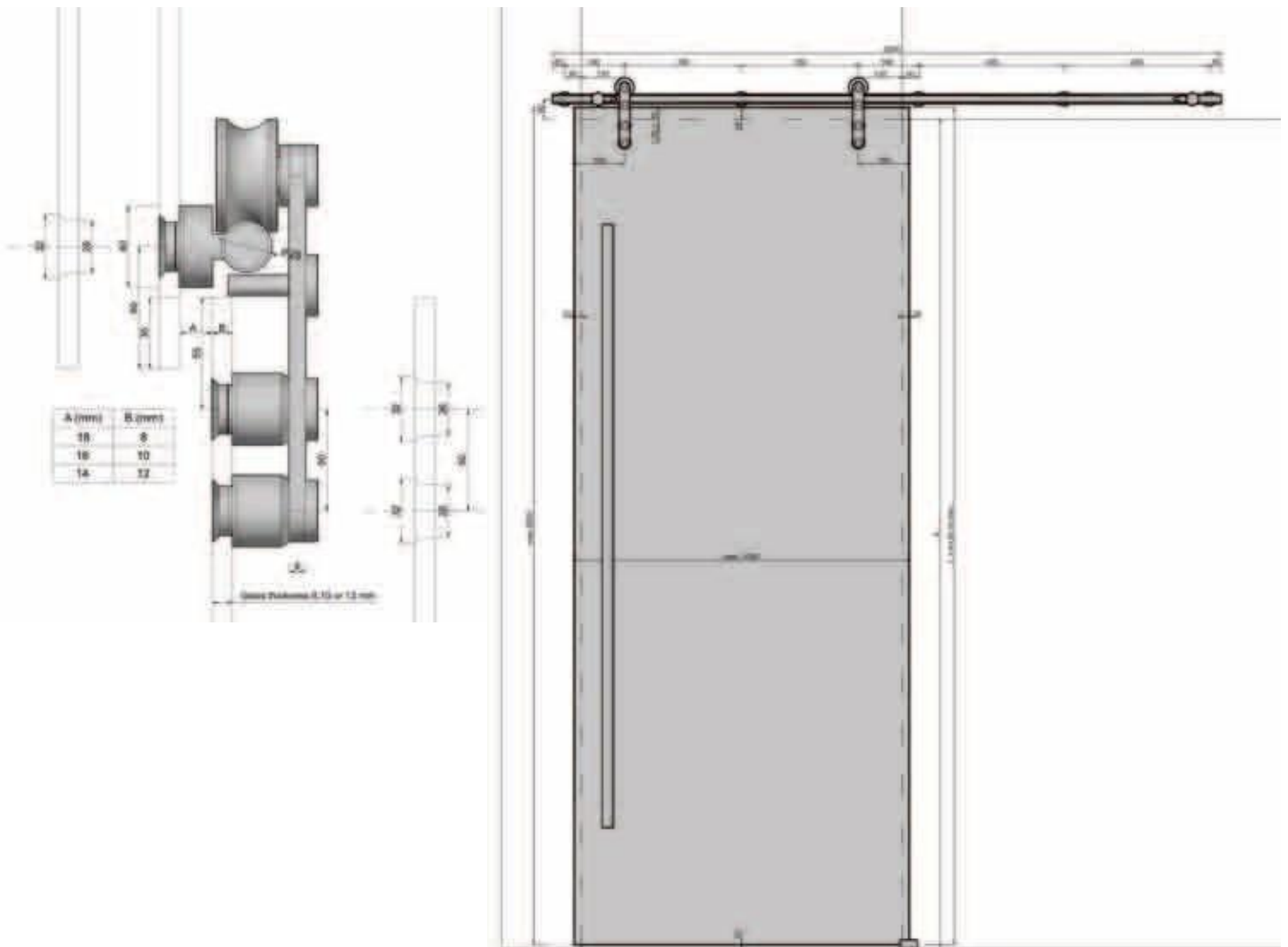


With anti-jump mechanism

- Assembly: Into glass · glass thickness tempered glass 8, 10, 12 mm
- door weight max. 150 kg · material: stainless steel (AISI 1.304) · length sliding track tube 2000 mm

Art. no.

BO 5214162G



SlideTec Premium Sliding Door System

Timeless elegance is one of the outstanding features of the SlideTec Floor Premium sliding door fittings. The system moves doors of up to 150 kg almost without a sound. It is ideally suited for space requirements where the ceiling has minimum static load capacity. The SlideTec Floor Premium sliding door fittings are appropriate for 10 and 12 mm glass. The floor profile can selectively be screwed or bonded to the floor.



▶ SlideTecPremiumFloorSlidingDoorFittingsSet,CeilingMounting,SingleDoors



With fixed glazing profile

i Assembly: Ceiling mounting · glass thickness tempered glass 10, 12 mm · length 2150 mm · door weight max. 150 kg · single door · material: stainless steel (AISI 1.304)

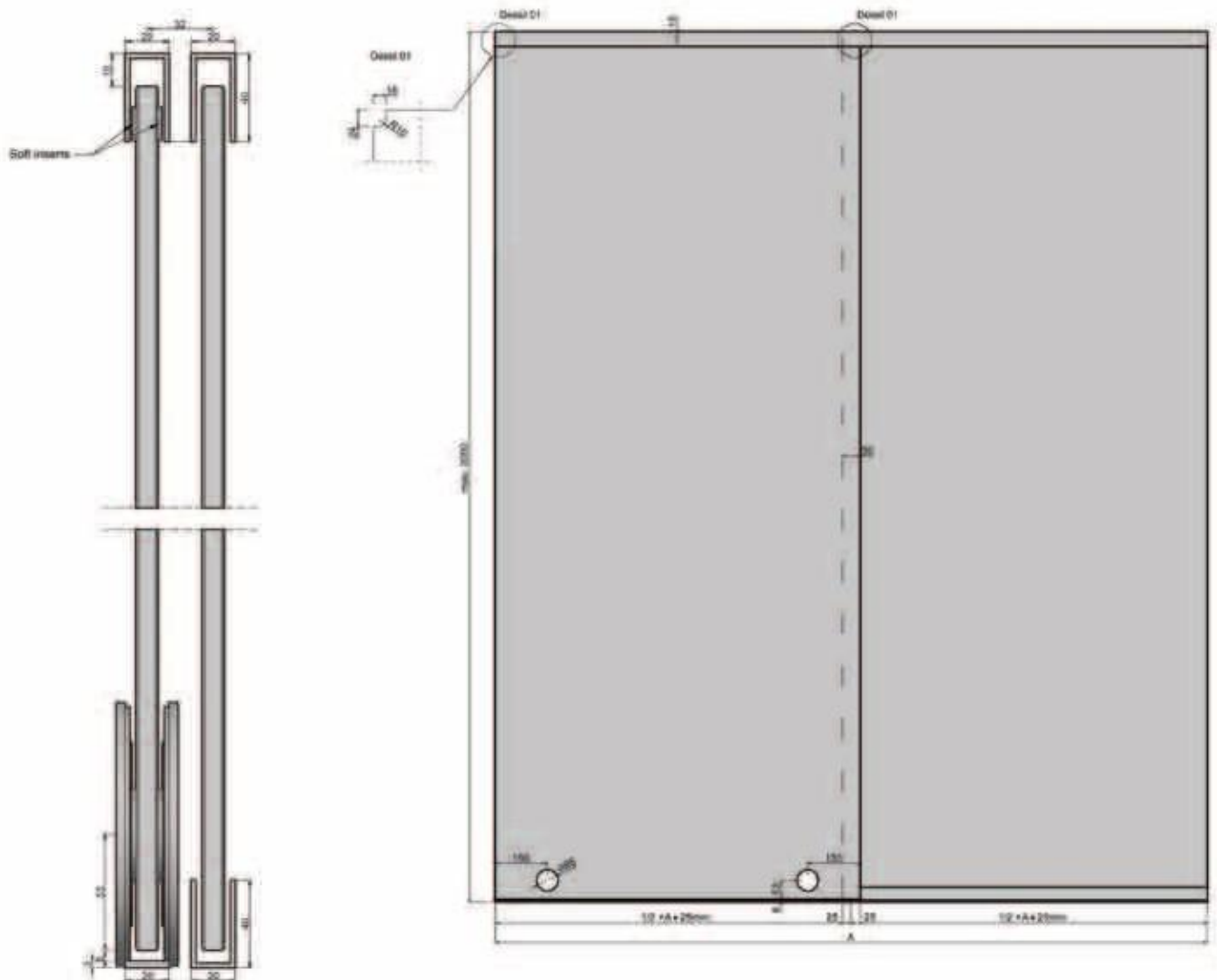
Set includes:

- 1 item Upper running track with pre-mounted stopper
2150 mm
- 1 item Bottom guide made of stainless steel with pre-applied adhesive tape
2150 mm
- 2 items Fixed glazing profile, length = 1150 mm
- 2 items End caps, front, for fixed glazing profile
- 1 item Rubber wedge for 12 mm glass
- 1 item Rubber wedge for 10 mm glass
- 2 items Rollers
- 4 items Roller inserts for 12 mm glass
- 8 items Soft inserts

Attention: Please order handles separately, e.g. BO 5214217N.

Art. no.

BO 5214167





SlideTec Premium Floor Sliding Door Fittings Set, Ceiling Mounting, Double Doors



i Assembly: Ceiling mounting · glass thickness tempered glass 10, 12 mm · length 2150 mm · door weight max. 150 kg · double doors · material: stainless steel (AISI 1.304)

Set includes:

2 items Upper running track with pre-mounted stopper 2150 mm
2 items Bottom guide made of stainless steel with pre-applied adhesive tape 2150 mm

4 items Rollers

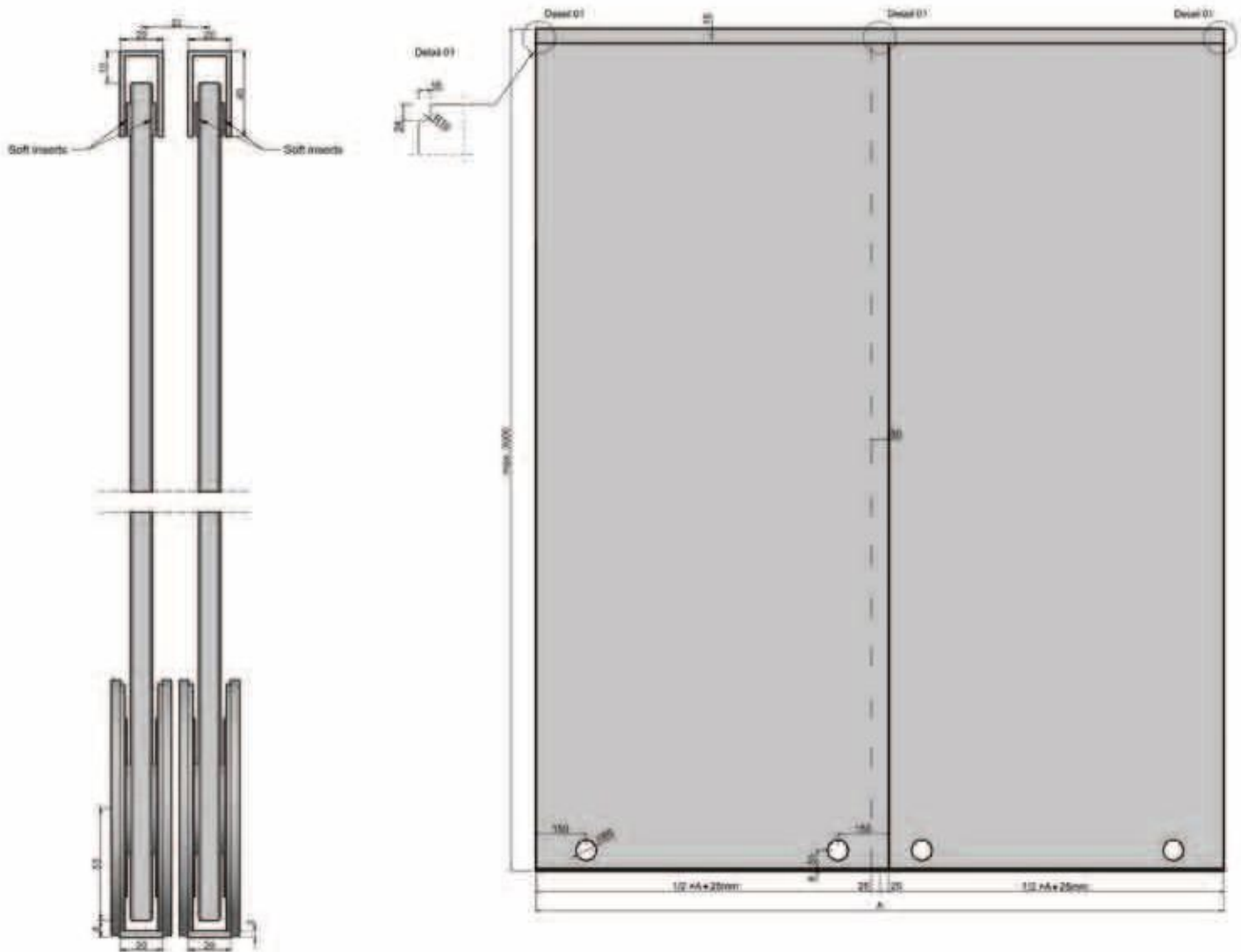
8 items Roller inserts for 12 mm glass

8 items Soft inserts

Attention: Please order handles separately, e.g. BO 5214217N.

Art. no.

BO 5214168



▶ SlideTec Premium Floor Sliding Door Fitting Set, Wall-Mounting, Single Door



i Assembly: Wall mounting · glass thickness tempered glass 10, 12 mm · length 2150 mm · door weight max. 150 kg · single door · material: stainless steel (AISI 1.304)

Set includes:

1 item Upper running track with pre-mounted stopper 2150 mm and wall-mounting appliance with spacer and bottom guide made of stainless steel with pre-applied adhesive tape 2150 mm

2 items Rollers

4 items Roller inserts for 12 mm glass

1 item Cover profile wall-mounting 2150 mm

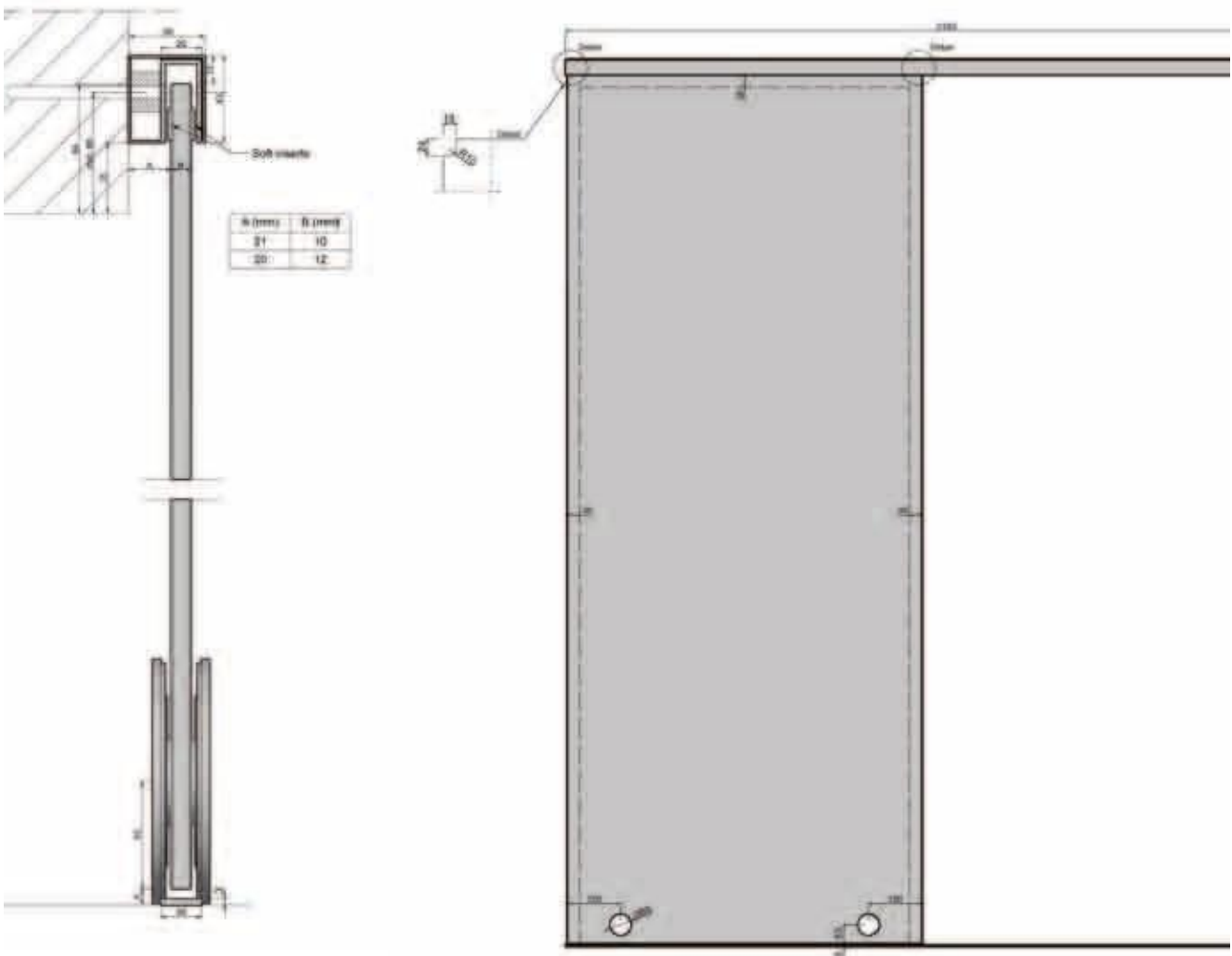
8 items Softinserts

2 items End caps wall mounting, upper running profile

Attention: Please order handles separately, e.g. BO 5214217N.

Art. no.

BO 5214169



104 Signage and Information Systems

Premium Magnetic Point Fixings

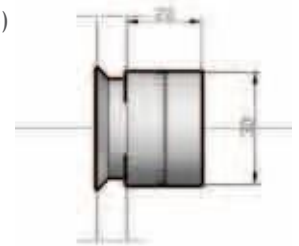
Reduce to the max - the magnetic point fixings set new trends for individual interior design. Regardless of whether they are used for fixing signage systems, pictures or partition walls: The Premium magnetic point fixings, either with a countersunk hole or as version for UV bonding, leave plenty of space for new room concepts.



Premium Magnetic Point Fixings

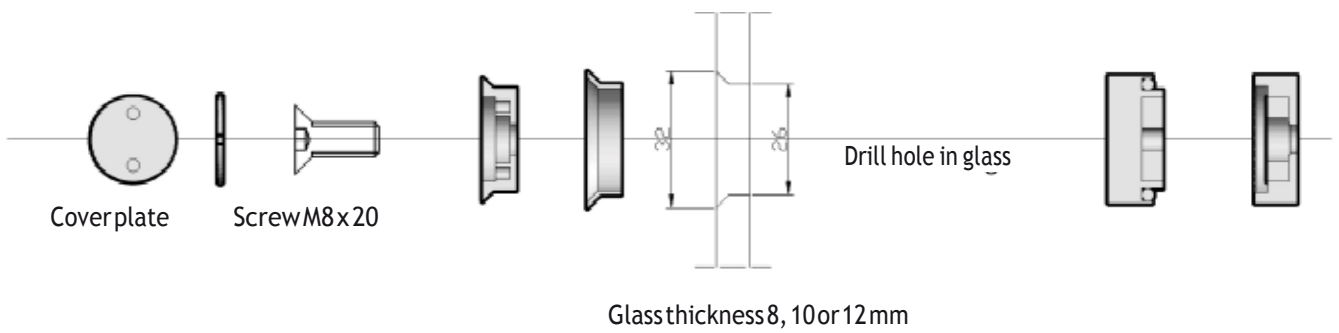


❶ Diameter 30 mm · load capacity 5 kg · material: stainless steel (AISI 1.304)



Art. no.

BO 542092



Premium Magnetic UV Point Fixings



❶ Diameter 30 mm · load capacity 5 kg · material: stainless steel (AISI 1.304)

Art. no.

BO 542093

